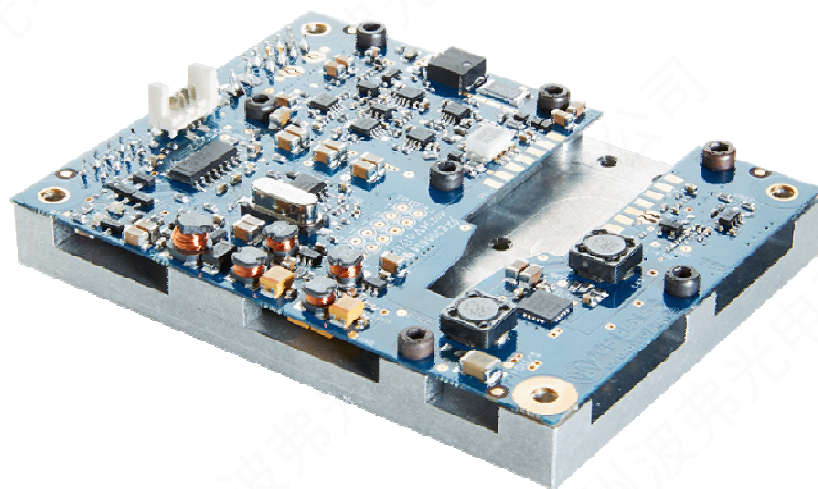




User Manual

BFS-VRM 03 HP
BFS-VRM 03 LP







 PicoLAS

Table of Contents

| | |
|--|----|
| Please pay Attention to all Safety Warnings!..... | 2 |
| Product Overview | 3 |
| How to use the Manual..... | 4 |
| How to get started..... | 5 |
| Dos and Don'ts | 6 |
| Required Laser Diode Pinout | 6 |
| Required electrical Characteristics of the Laser Diode | 7 |
| Operation Principle of the BFS-VRM 03 | 7 |
| Description of the Connectors of the BFS-VRM 03 | 9 |
| Input (#2) and Current Monitor (#1) | 10 |
| Input Overdrive (#2) - only for BFS-VRM 03 HP | 11 |
| Propagation Delay (#2 to #1)..... | 12 |
| Power Supply (#3) and Supply absolute maximum Ratings | 12 |
| Description of the RS-232 Connector (#4)..... | 13 |
| How to connect the PLB-21 to the RS-232 Connector (#4)..... | 13 |
| Description of the I/O Connector (#5)..... | 14 |
| Linearity | 15 |
| Cooling | 16 |
| Test Load | 16 |
| TEC Stage..... | 16 |
| Laser Fire Monitoring Output (#5-2) | 17 |
| Visual Indication (#5-3)..... | 17 |
| Absolute maximum Ratings | 17 |
| Mechanical Dimensions | 18 |
| I ² C Interface..... | 20 |
| Controlling the BFS-VRM 03 using a PLB-21 | 21 |
| Controlling the Driver via a PC | 24 |
| The PicoLAS Protocol..... | 28 |

Please pay Attention to all Safety Warnings!

Symbols used in this manual:

| | |
|---|------------------------------|
|  | Risk of electrical hazard |
|  | Please pay special attention |
|  | Do not |
|  | Valuable information, remark |



BFS-VRM 03 HP / LP

Highspeed Seed Driver



- Output current: 0 .. 3 A³
- Baseplate cooling

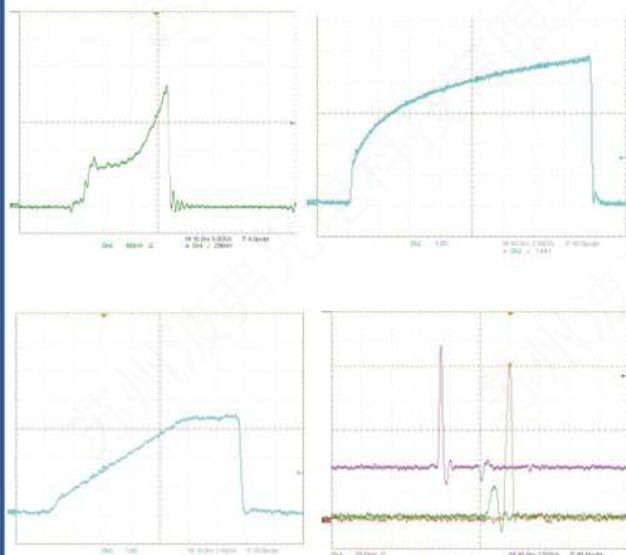
HP version

- Analog modulation dc .. 400 MHz
- Pulse width: 1 ns .. cw

LP version

- Analog modulation dc .. 25 MHz
- Pulse width: 20 ns .. cw

Technical Data⁴



| | |
|------------------------------------|---|
| Output current | 0 .. 3 A pulse ³ or 0.5 A cw |
| Max. compliance voltage | Single laser diode |
| Current noise | < 3 % |
| Current overshoot | < 5 % |
| Analog modulation | < 400 MHz ¹ , 25 MHz ² |
| Current settling time (full-scale) | < 15 ns |
| Current setting input | 0 .. 1000 mV (3 A/V) |
| Current monitor | 4.8 A/V |
| TEC controller | 1.2 A |
| TEC current | -1.2 .. 0 .. 1.2 A |
| TEC voltage | -2.3 .. 0 .. 2.3 V |
| TEC setpoint | Via RS-232 |
| TEC stability | Up to 0.001 K |
| Laser Fire | 500 ns TTL (retriggerable Monoflop, back facet monitor) |
| Supply voltage | 5 V DC (laser voltage) 5 V DC (TEC voltage) |
| Power dissipation | 12 W |
| Dimensions in mm | 65 x 85 x 15 |
| Weight | 110 g |
| Operating temperature | 0 to +55 °C |

Product Description

The BFS-VRM 03 is one of the worlds fastest analog modulated driver for seed applications, DVD-Disk mastering, printing applications, etc. With an output current from zero to 3 A it delivers enough power to overdrive single mode diodes for short pulses.

The pulse widths span from 1 ns to cw is continuously addressable via the analog input signal. This wide span is world unique.

Of course there are protective features and the driver is base plate cooled like all other drivers from PicoLAS.

- ¹ BFS-VRM 03 HP
- ² BFS-VRM 03 LP
- ³ With duty cycles up to 1%. Typical 3 A, guaranteed 2.5 A.
- ⁴ Specifications measured with a fast recovery diode instead of a laser diode. Technical data is preliminary and subject to change without further notice.

- Innovative current regulation concept actively prevents the laser diode from overshoots and over-current
- Protection against transients through regulated current rise time
- Overtemperature shutdown
- Enable/Disable input
- Driver status output
- Laser fire monitor
- Protection of the laser diode against reverse currents

Optional Accessories: PLCS-40
PLB-21

How to use the Manual



Remark: The BFS-VRM 03 described in this manual is a baseplate cooled laser diode driver. Improper cooling may cause an internal over temperature shutdown.

Baseplate cooling: Depending on the final application and operation regime, this unit may stay none-cooled or must be assembled onto a heat sink.

You may use a passively or an actively air/water cooled device.

Before powering on your unit, read this manual thoroughly and make sure you understood everything.

How to get started



The basic settings (temperature, BIAS current etc.) can be adjusted using the RS-232 or the PLB-21. You need an additional fast arbitrary waveform generator (AWG) which has to be connected to the Input MMCX-Terminal. There is no AWG on board of the seed driver!



The PCB is very thin. Mechanical force has to be avoided to prevent damage. Mechanical damages are not covered by warranty.

| Step | What to do | Check |
|------|---|--|
| 1 | Assemble the driver onto an appropriate heat sink. | Refer to section “Cooling”. |
| 2 | Solder a dummy diode between pin 10 and pin 11. Alternatively make a short circuit there. | Refer to section “Test load”. |
| 3 | Connect GND, +5 V TEC and +5 V LD on the power connector while the power supply is disabled. | Refer to section “Power Supply” for connector layout. |
| 4 | Connect AWG or pulse generator on input connector (no pulse before power supply is enabled). | Refer to section “Input” for allowed signal parameters. |
| 5 | Connect PLB-21 via D-SUB9 to Micro MaTch cable or connect to a PC. | Refer to cable drawings. |
| 6 | Connect oscilloscope with a 50 Ohm termination to the current monitor. | See section “Input” for details. |
| 7 | Turn the power supply on. | The green LED 2 should turn on after a few seconds. It indicates that the self test is successfully passed. |
| 8 | Communication with the driver must be possible at this point via PLB-21 or PC. | Check the +5 V TEC supply for this step with PLB-21 or the response to “ps” with the terminal interface. |
| 9 | Enable the AWG and feed a pulse on the input terminal. For example: 0.5 V amplitude, 1 μ s pulse width and 300 μ s repetition rate. | Make sure not to overload the laser diode or the driver. On the current monitor / oscilloscope a signal in correlation to the input signal should now be visible. Scaling of current monitor is 5 A/V. For details please refer to section “Linearity”. |
| 10 | Disable the input signal and turn off the power sources for +5 V LD and +5 V TEC. Take out the test diode or short. Assemble the final laser diode. | |
| 11 | Turn on the power supply for the +5 V TEC. With a laser diode for the TEC on the driver you can take the temperature settings on the PLB-21. | Use the menu TEC Setpoint → TEC stp. |
| 12 | Apply the driving signal. | Make sure not to overload the laser diode! |

* Typical 3 A, guaranteed 2.5 A

Dos and Don'ts

Never ground any output connector.

Do not connect your oscilloscope to pin 10 and pin 11! This will immediately destroy the driver and the probe!



Keep connecting cables between power supply and driver as well as the connection between driver and laser diode as short as possible.

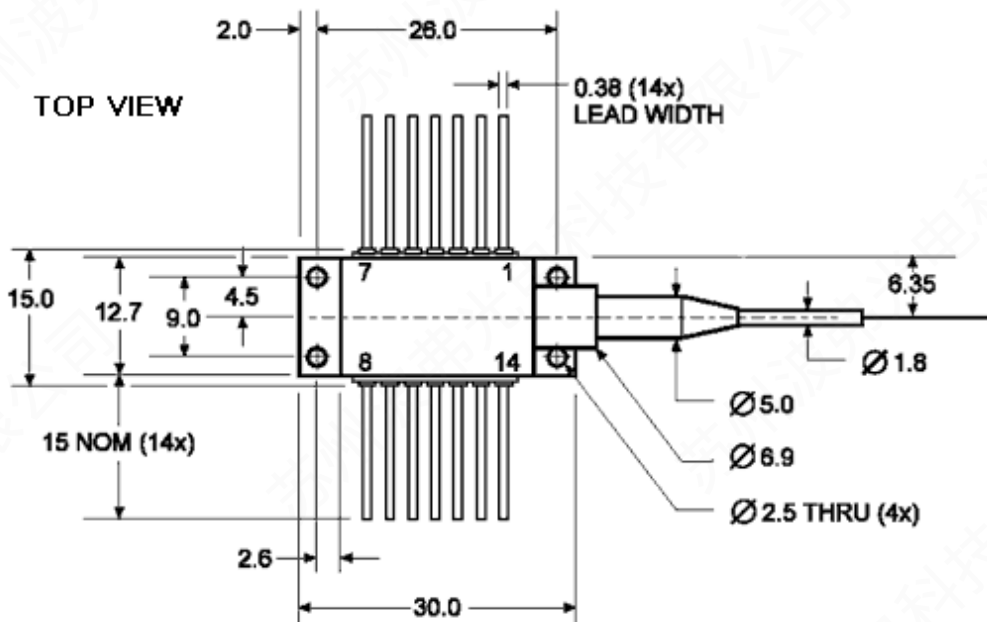
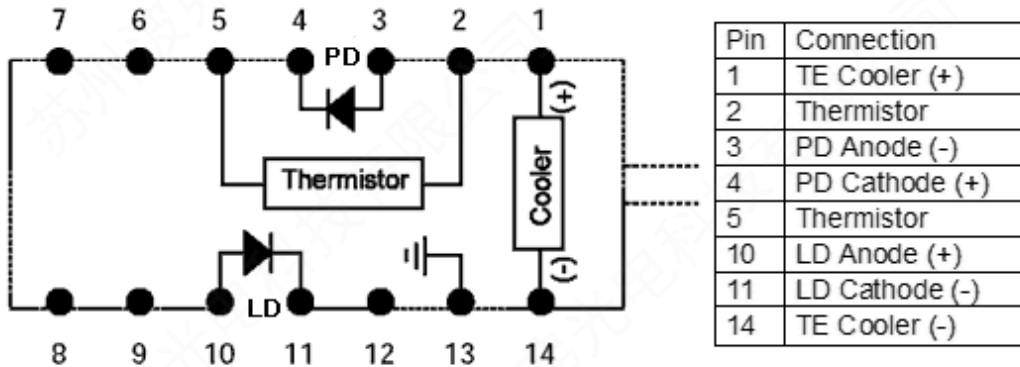
Mount the driver on an appropriate heat sink!



Please be aware that there might be hot surfaces. Be careful not to touch them!

Required Laser Diode Pinout

The BFS-VRM 03 is designed for the use with laser diodes in a butterfly package according to the following pin layout:



The driver is connecting pin 9 & 10 and pin 11 & 12 together. Pitch of the legs: 2.5 mm. Distance of the legs to bottom of the chassis: 4.5 mm.



Please shorten the legs to avoid short circuits inside the driver



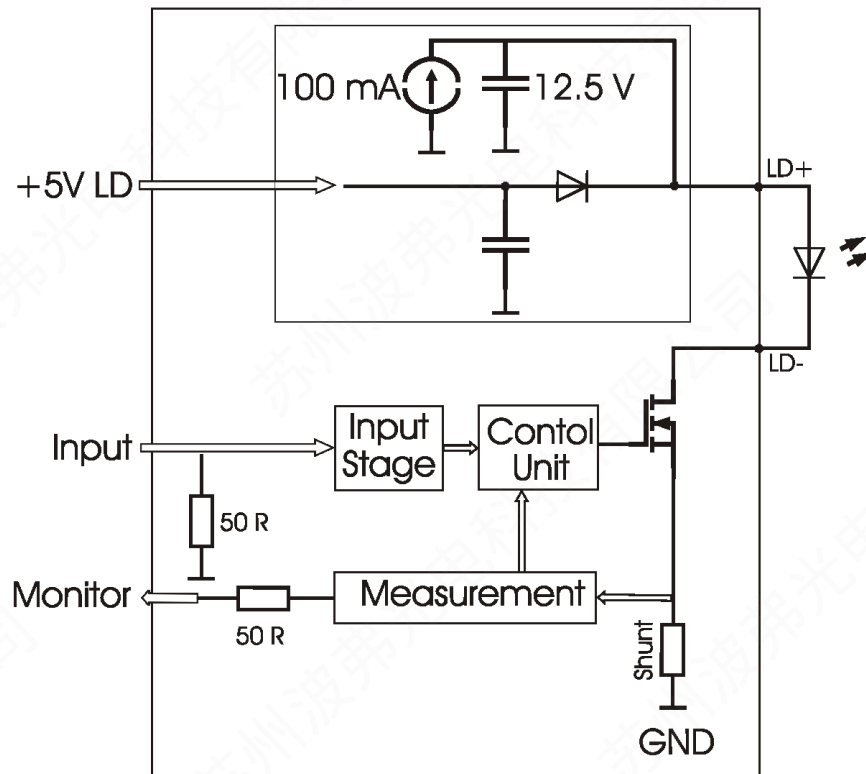
The maximum internal stray impedance must not exceed ~ 10 nH to achieve best performance

Required electrical Characteristics of the Laser Diode

| Parameter | Comment | Min. | Typ. | Max. |
|------------------------------------|----------------------------------|-----------------------------|-------|--|
| Laser diode forward voltage | | 0 V | 1.8 V | 2.2V |
| Back facet monitor reverse voltage | | | 5 V | 15 V |
| Back facet monitor responsivity | 5 V reverse voltage | 0.5 $\mu\text{W}/\text{mA}$ | | 20 $\mu\text{W}/\text{mA}$ (10 $\mu\text{W}/\text{mA}$ typ) |
| Back facet monitor dark current | 5 V reverse (bias) voltage | | | 40 Na |
| Thermistor resistance | At 25 °C | 9.5 k Ω | | 10.5 k Ω |
| TEC current | Peak current (short term) | | | 2.0 A |
| TEC current | Continuous current | 0 A | 1.0 A | 1.5 A |
| TEC voltage | Depending on type of laser diode | | | 3 V |

Operation Principle of the BFS-VRM 03

Laser driver block diagram



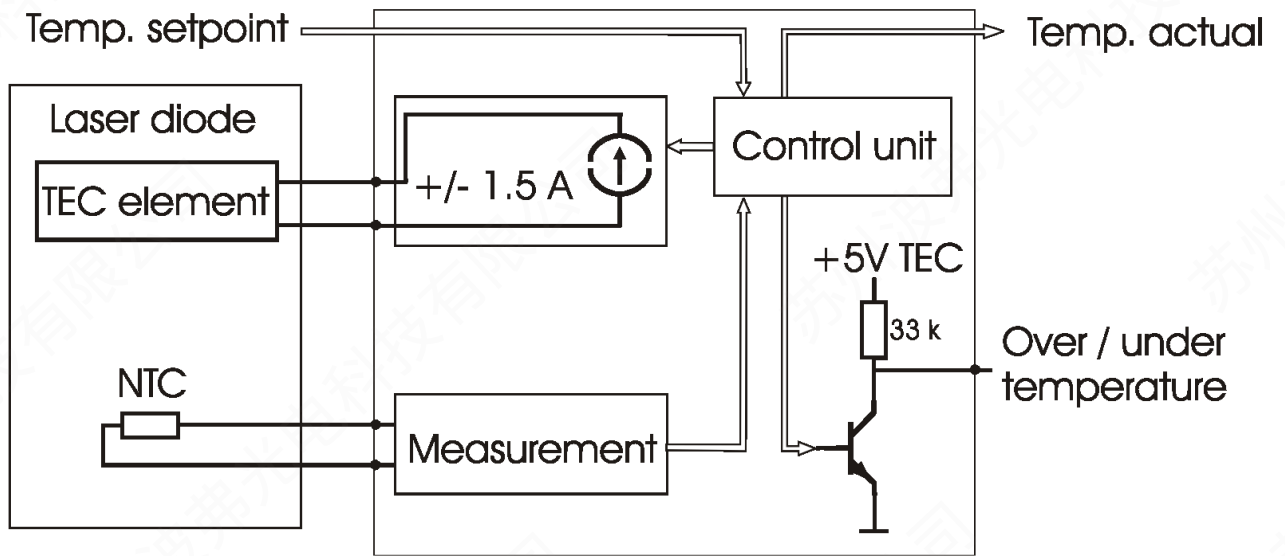
The output current follows the analog input signal within a range of 0 .. 3 A. An input voltage of 1000 mV equals an output current of 3 A. The typical output current of max. 3 A is available with duty cycles up to 1%.

In cw operation the output current is limited to 500 mA.

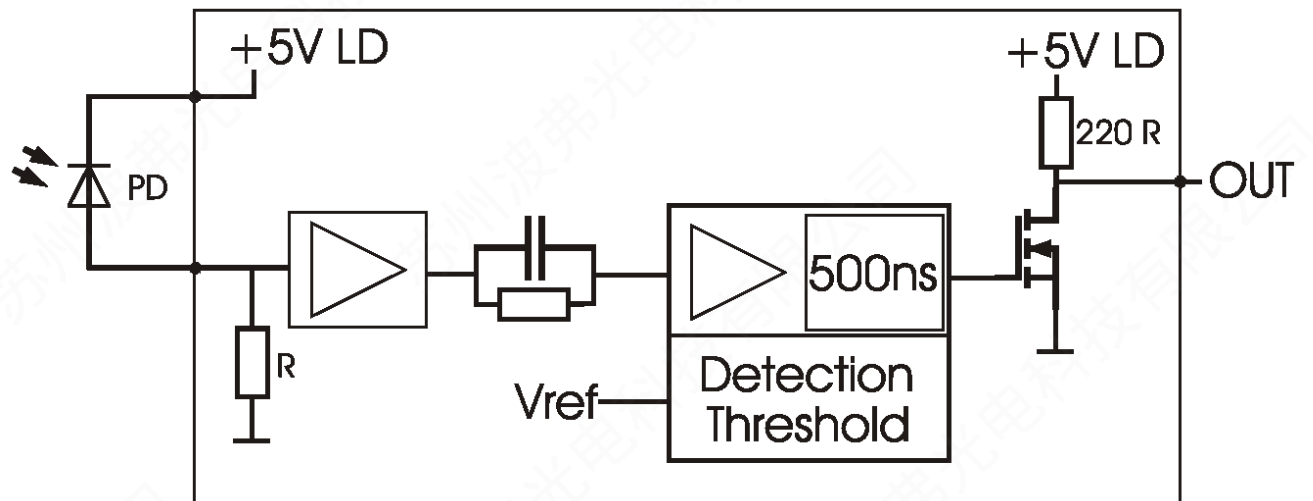
The control unit applies a bias current on the output. It is calibrated by the manufacturer within a range of 10 .. 20 mA. This bias current is added to the output, even if the analog input signal is set to 0 V. It is necessary for normal operation.

An internal power source of 12.5 V is used to achieve fast current rise times down to 1 ns. Due to internal power losses its capacity is limited. This will lead to higher current rise times of more than 3 ns, if the duty cycle is above 1% while the output is 3 A. In order to achieve fast current rise times with higher duty cycles, the output current must be reduced.

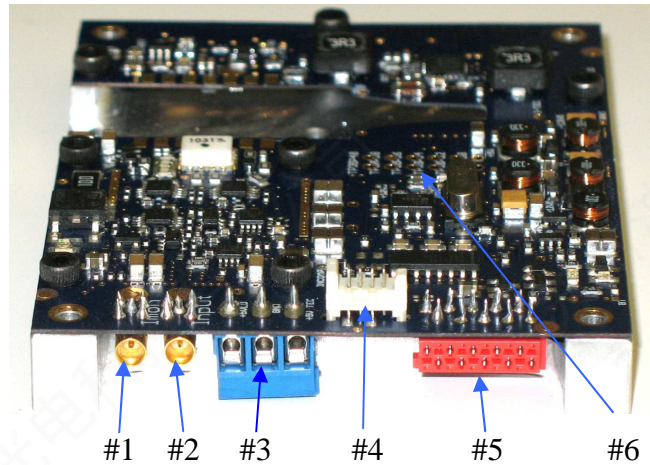
TEC driver block diagram



Laserfire block diagram



Description of the Connectors of the BFS-VRM 03

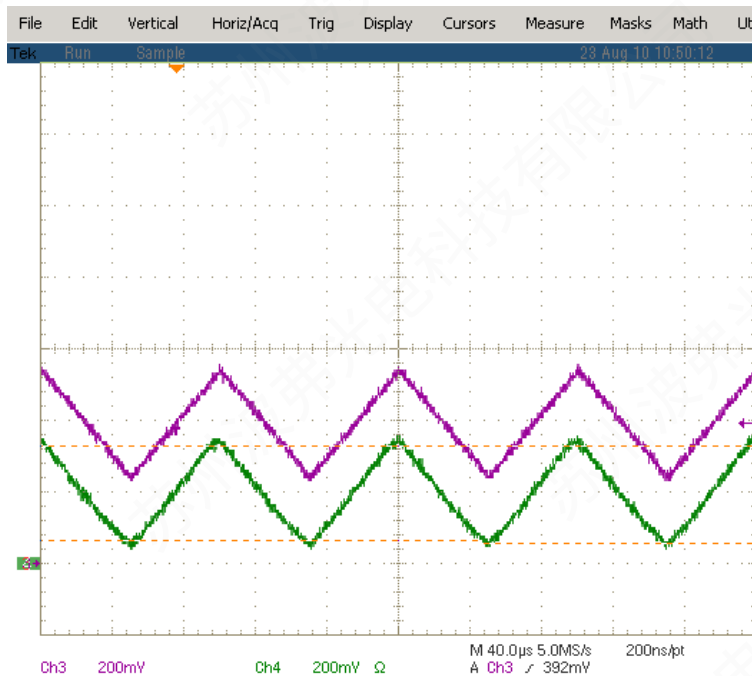
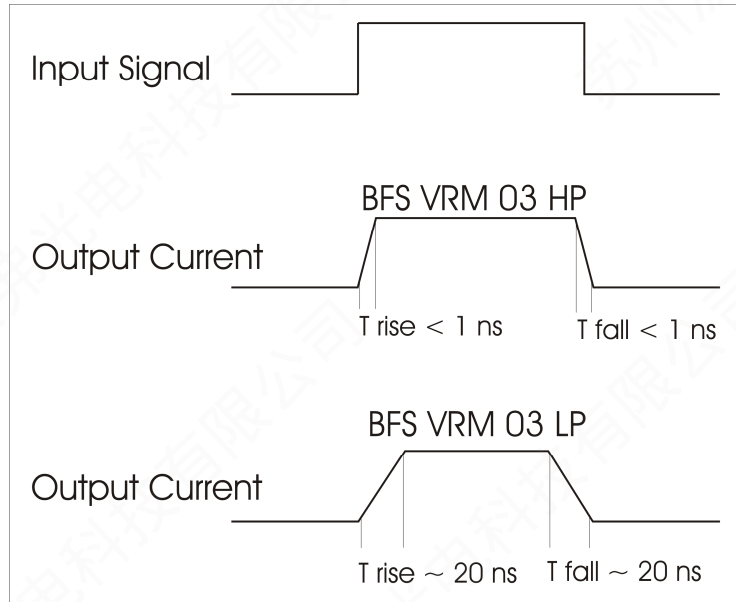


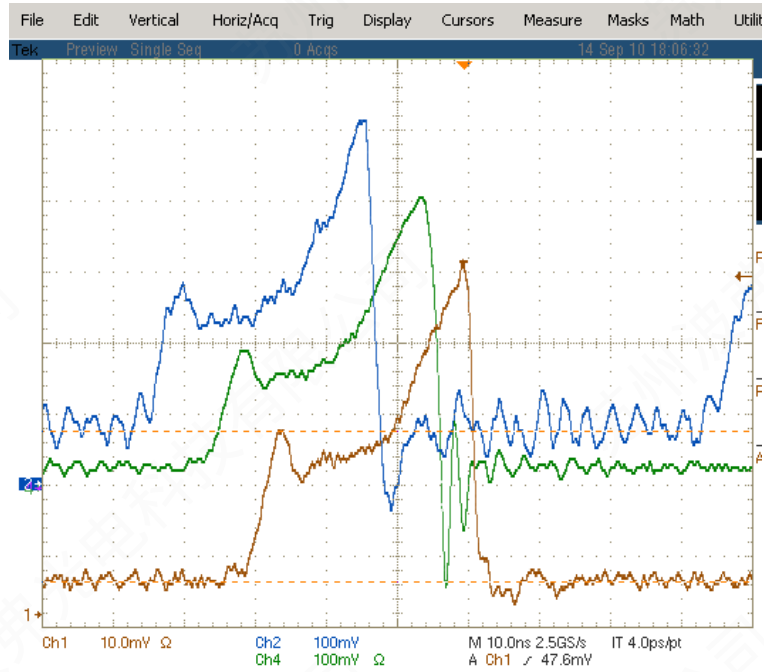
| Connector | Function | Assembled Type | You need: |
|-----------|----------------------------------|------------------------------------|--|
| #1 | Current monitor (Output) | MMCX, female MOLEX - 73415-1001 | MMCX, male (e.g. Farnell 1111325) |
| #2 | Signal input | MMCX, female MOLEX - 73415-1001 | MMCX male (e.g. Farnell 1111325) |
| #3 | Power connector | Screw terminals | - |
| #4 | RS-232 | MOLEX_908140004 | MOLEX - 90327-0304 (e.g. Farnell 673146) |
| #5 | I/O | Micro-MaTch, female 8-215460-0 | Male on wire 1-215083-0 (e.g. Farnell 1772972) |
| #6 | Programming adapter. Do not use. | | |

Input (#2) and Current Monitor (#1)

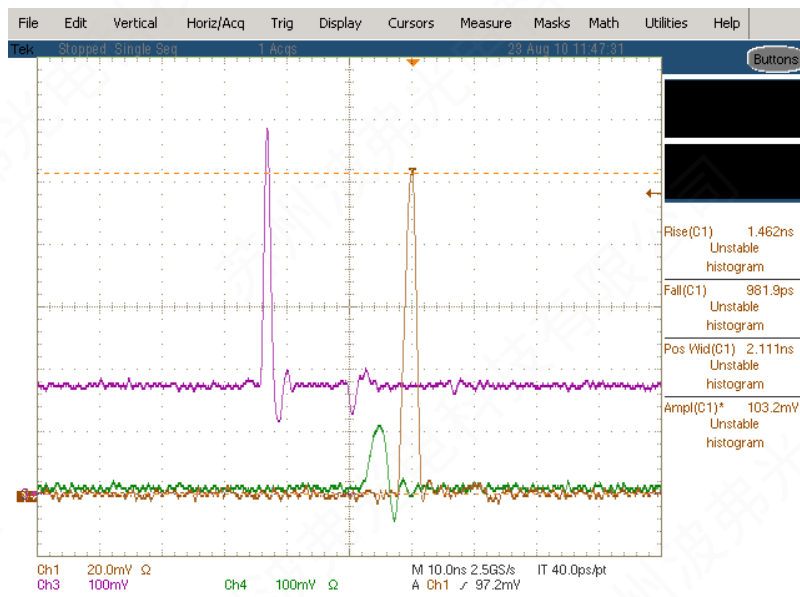
For triggering the output of the driver an analog signal needs to be provided via connector #2 signal input. The output current is following the input signal within the limitations (bandwidth, max. current, rise time) proportional (refer to section “Linearity”).

By using of 50 Ohm termination the current monitor has a scaling of 4.8 A/V. It has a typical offset voltage about 12 mV .. 25 mV.





Input Overdrive (#2) - only for BFS-VRM 03 HP



Propagation Delay (#2 to #1)

The typical propagation delay from input to start of current flow is typ. 10 ns. Additional 8 ns appear through the internal current monitor.



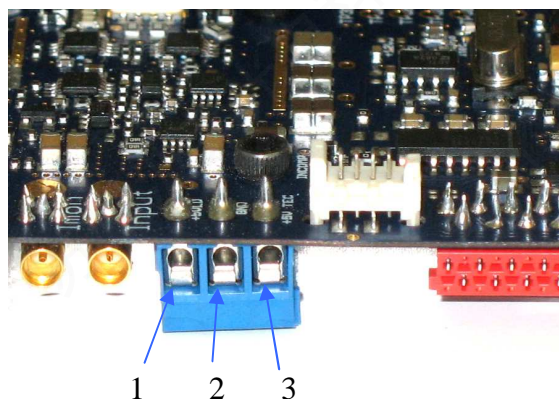
Power Supply (#3) and Supply absolute maximum Ratings

The seed driver requires a steady +5 V for the μ C and TEC and a separated steady +5 V for the laser driver itself.

The μ C supply must not shut down before the laser driver supply is down.

The laser driver supply can be interrupted at any time for e.g. safety reasons by the customer.

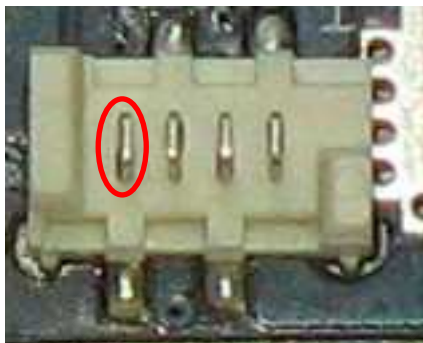
If this kind of safety function is not required, both +5 V may be connected together.



| Pin of conn. #3 | Allowed range | Best performance | Destroying limit |
|--------------------|------------------|------------------|------------------|
| 1 (laser supply) | 4.75 V .. 5.5 V | +5.5 V | +6.5 V |
| 2 (GND) | GND | GND | |
| 3 (μ C & TEC) | 4.75 V .. 5.25 V | +5.0 V | +6 V |

The no-load current at LD+ is approximately 600 mA.

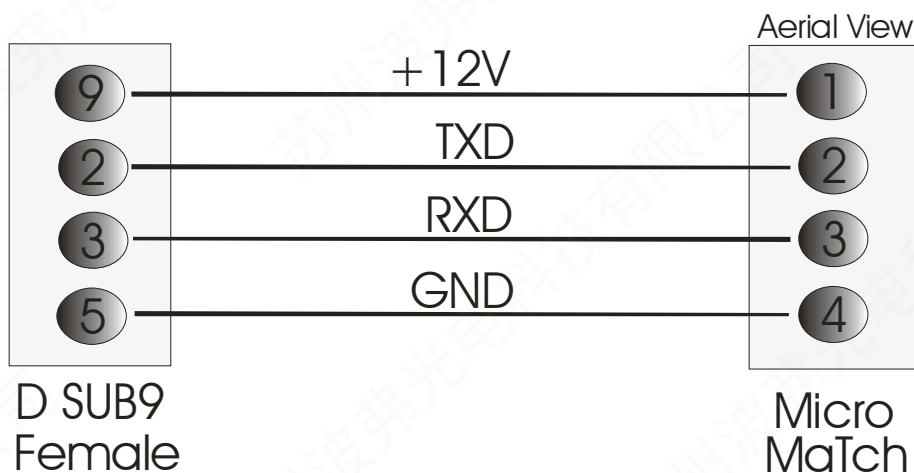
Description of the RS-232 Connector (#4)



| Pin Number | Description | Direction | Comments |
|-------------------|-------------|-----------|--|
| 1 (marked in red) | +12 V | Output | Only for the use with the PLB-21, prevent any overload or short! (max. 100 mA) |
| 2 | TXD | I/O | RS-232 standard serial interface |
| 3 | RXD | I/O | RS-232 standard serial interface |
| 4 (right) | GND | Output | |

The RS-232 interface can be used with a PC and a terminal program or with the PLB-21.

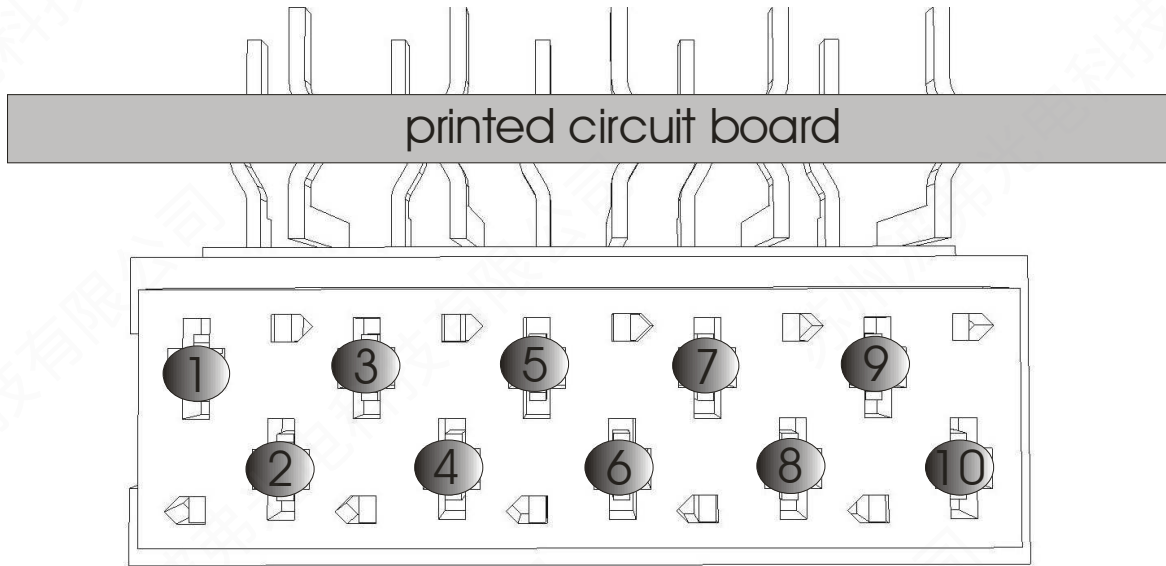
How to connect the PLB-21 to the RS-232 Connector (#4)



To connect the PLB-21 to the seed driver, a cable according the scheme above is required.

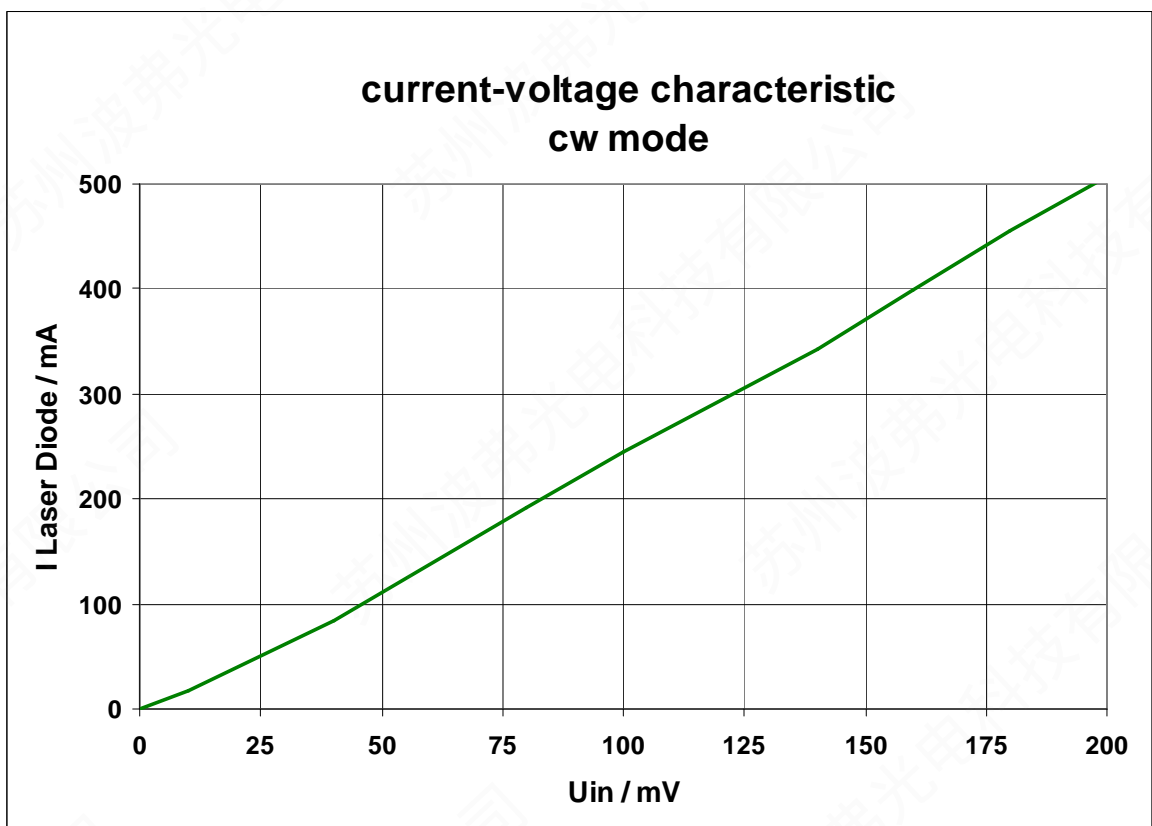
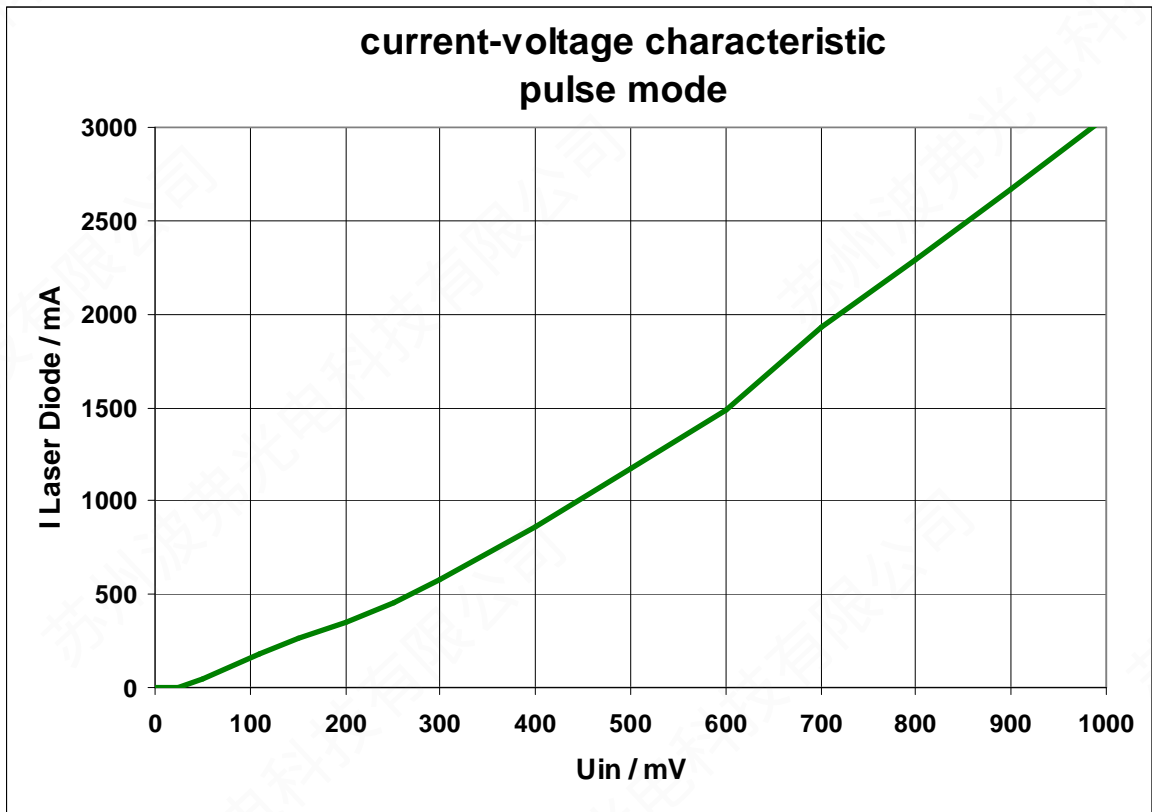
- D SUB9 female on cable: Harting 0966118 7500
- Micro MaTch on cable: Molex 90327-0304

Description of the I/O Connector (#5)



| Pin | Function |
|-----|--------------------------|
| 1 | GND |
| 2 | Laser Fire |
| 3 | GND |
| 4 | TxD RS-232 |
| 5 | GND |
| 6 | Over- / Undertemperature |
| 7 | GND |
| 8 | RxD RS-232 |
| 9 | SCL (I2C) |
| 10 | SDA (I2C) |

Linearity



Cooling

The seed driver is baseplate cooled only. Please assemble the entire unit to a heatsink which is capable to take out the heat.

The heatsink is suitable, if the system temperature does not exceed the maximum operating limits. To achieve best performance the baseplate temperature should be kept in the range of +10 °C .. +35 °C. The peak heat load is 25 W.

Test Load

For the first testing a test load may be assembled instead of the laser diode. This test load may be a short circuit or a fast Schottky diode like ES3C. Please connect the test load only between anode and cathode (LD+ and LD-) and prevent shorts to any other part of the circuit.

TEC Stage

The seed driver has got an internal TEC stage to drive typical TECs inside the butterfly package.

All parameters can be set digitally via I2C, RS-232 or the PLB-21. There is no analog input or potentiometers for these setpoints on the board.

- TEC setpoint adjustment: 0 °C .. +70 °C
- TEC temperature accuracy: +/-0.1 °C

Switching points at > 1.5 °C from setpoint temperature result a low signal on the over- / undertemperature output.

If the actual temperature reaches the setpoint temperature the over- / undertemperature output will be pulled to a high signal.

Laser Fire Monitoring Output (#5-2)

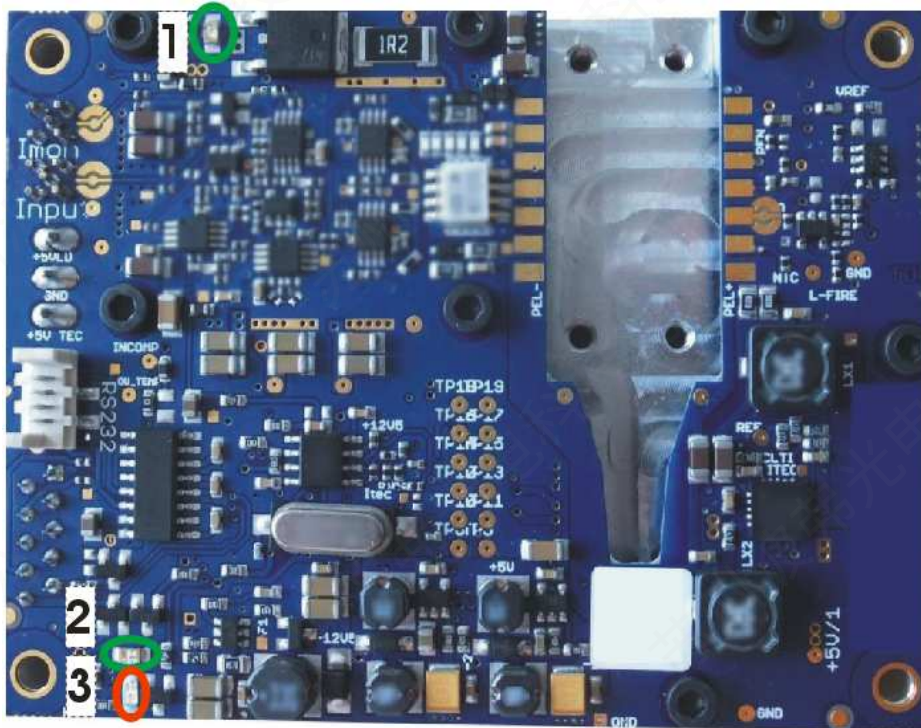
The seed driver is equipped with a laser firing monitor (Terminal #5, pin 2).

The output is TTL and gets high whenever the current of back facet monitor diode is above the triggering threshold.

- Output: +5 V TTL (active = HIGH)
- Output style: Open collector, internal pull-up 220 R, short circuit current max. 25 mA.
- Threshold setpoint is set digitally via I2C, RS-232 or PLB-21
- Output remains high if signal remains above threshold
- Short pulses are prolonged to 500 ns (retriggerable monoflop)
- A high frequency pulse train (pulse distance shorter than 500 ns) will appear as a constant high signal at the output.

Visual Indication (#5-3)

- LED 1: The green LED indicates a current flow through the capacitors during and after an emission. A faint glow is usually observable also due to the bias current without emission.
- LED 2: The green LED light is on when the power supply voltage of +5 V for TEC and for laser driver are in within valid range.
- LED 3: The red LED light is on when the supply voltage is too low.



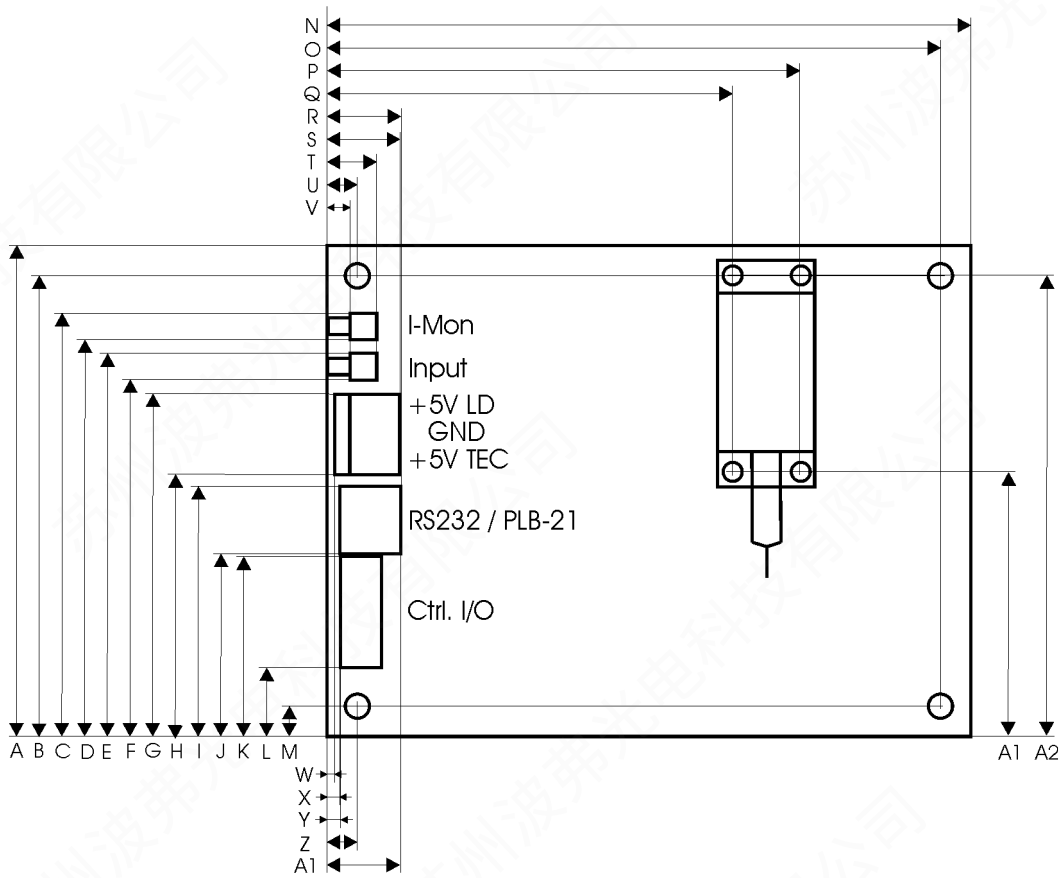
Absolute maximum Ratings

- All input pins must not exceed the voltage range below zero (GND) and beyond VCC
- VCC limit: Refer to table in section “Power Supply (#3)”
- Peak TEC current: +/- 1.5 A
- Max /UT /OT current: 10 mA
- Operating temperature range: 0 °C .. +60 °C
- Best performance operating temperature range: +10 °C .. +35 °C
- Storage temperature range: -20 °C .. +70 °C non condensing

Mechanical Dimensions

The following dimensions are in millimetres (mm).

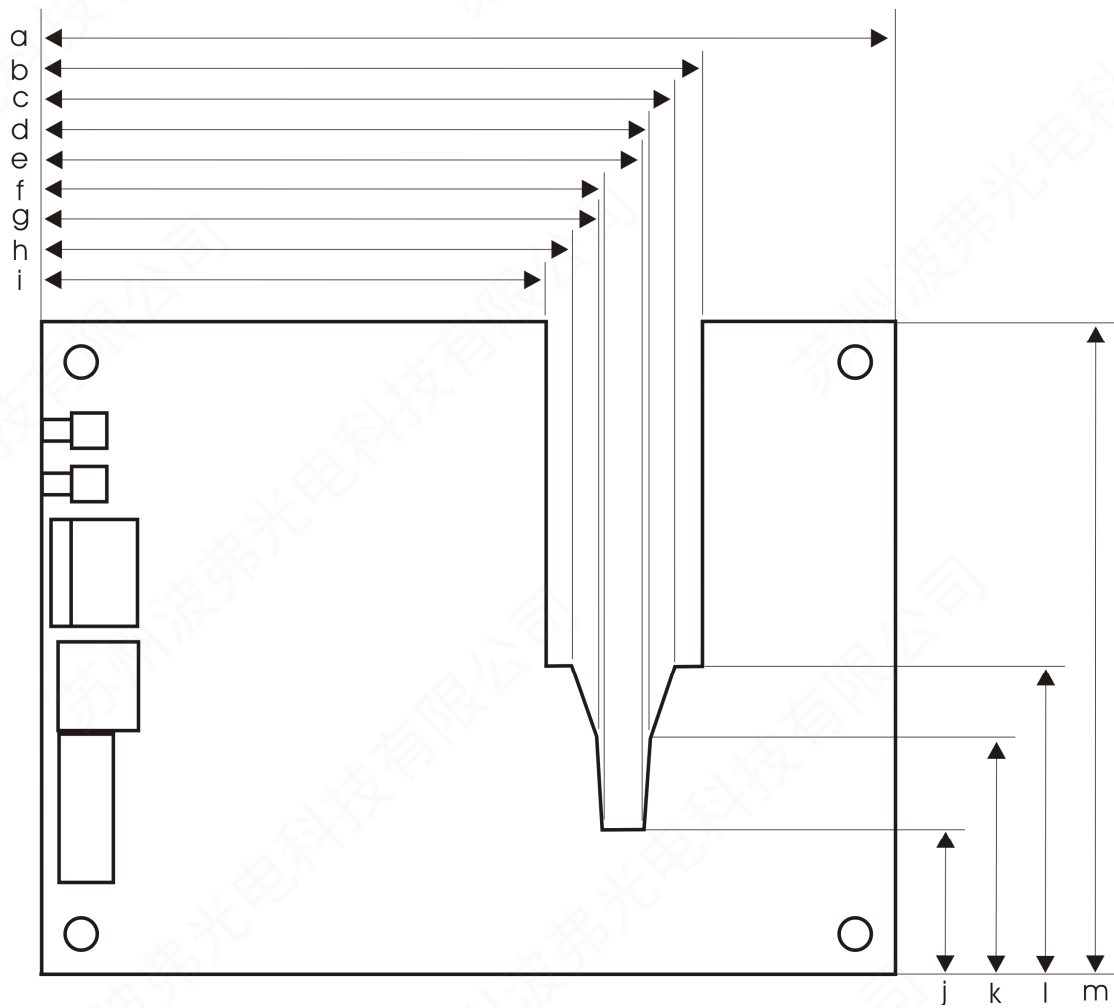
The four via holes on the corners are suitable for M3 screws. With these screws the driver can be mounted onto an appropriate heat sink.



| | |
|---|------|
| A | 65 |
| B | 61 |
| C | 56 |
| D | 52.4 |
| E | 50.7 |
| F | 47.1 |
| G | 45.3 |
| H | 37.7 |
| I | 33.3 |
| J | 24.2 |
| K | 23.9 |
| L | 9 |
| M | 4 |
| N | 85 |

| | |
|----|-------|
| O | 81 |
| P | 62.55 |
| Q | 53.65 |
| R | 9.5 |
| S | 9.45 |
| T | 56 |
| U | 4 |
| V | 3 |
| W | 0.8 |
| X | 1.7 |
| Y | 1.9 |
| Z | 4 |
| A1 | 35.05 |
| A2 | 61.05 |

The following dimensions are in millimetres (mm).



| | |
|---|------|
| a | 85 |
| b | 65.5 |
| c | 63.1 |
| d | 60.7 |
| e | 59.8 |
| f | 56.3 |
| g | 55.6 |
| h | 53.1 |
| i | 50.7 |
| j | 15.1 |
| k | 24 |
| l | 31.1 |
| m | 65 |

I²C Interface

The driver is equipped with a standard I²C slave interface. It supports 7 bit slave addressing and is 3.3/ 5 V compatible.

It implements an I²C ram with 32 bit wide data words. An internal address counter increments automatically as soon as 3 bytes of a register are read/written. All registers are big endian encoded. It is possible to read out or write all registers in a row. Any changes are applied as soon as a complete register is written.

Writing commands need some time to complete, thus the I²C slave uses the clock stretching technique to notify the master that it is not ready. The I²C master must be able to detect clock stretching if more than one register is written at a time.

The following table shows the internal register assignment:

| Address | Name | Register size | Unit |
|---------|------------------------------|---------------|--------|
| 0 | bias min | 32 bit | mA |
| 1 | bias max | 32 bit | mA |
| 2 | bias setpoint | 32 bit | mA |
| 3 | uincomp min | 32 bit | -- |
| 4 | uincomp max | 32 bit | -- |
| 5 | uincomp setpoint | 32 bit | -- |
| 6 | actual +5V LD | 32 bit | 0.01 V |
| 7 | actual +5V TEC | 32 bit | 0.01 V |
| 8 | actual TEC temperature | 32 bit | 0.1 °C |
| 9 | actual TEC current | 32 bit | 0.1 °C |
| 10 | actual NTC temperature | 32 bit | 0.1 °C |
| 11 | TEC Kp min | 32 bit | -- |
| 12 | TEC Kp max | 32 bit | -- |
| 13 | TEC Kp | 32 bit | -- |
| 14 | TEC Ki min | 32 bit | -- |
| 15 | TEC Ki max | 32 bit | -- |
| 16 | TEC Ki | 32 bit | -- |
| 17 | TEC Kd min | 32 bit | -- |
| 18 | TEC Kd max | 32 bit | -- |
| 19 | TEC Kd | 32 bit | -- |
| 20 | TEC min setpoint | 32 bit | 0.1 °C |
| 21 | TEC max setpoint | 32 bit | 0.1 °C |
| 22 | TEC setpoint | 32 bit | 0.1 °C |
| 23 | TEC current limiter max | 32 bit | 0.01 A |
| 24 | TEC current limiter min | 32 bit | 0.01 A |
| 25 | TEC current limiter setpoint | 32 bit | 0.01 A |
| 26 | Vref min | 32 bit | 0.01 V |
| 27 | Vref max | 32 bit | 0.01 V |
| 28 | Vref setpoint | 32 bit | 0.01 V |
| 29 | ERROR register | 32 bit | -- |
| 30 | LSTAT register | 32 bit | -- |
| 31 | Ugate2 min | 32 bit | 0.01 V |
| 32 | Ugate2 max | 32 bit | 0.01 V |
| 33 | Ugate2 setpoint | 32 bit | 0.01 V |

Controlling the BFS-VRM 03 using a PLB-21

To control the driver with a PLB-21 it must be connected via the enclosed cable. When the PLB-21 is connected the first time you are asked to download a new driver. This must be confirmed with “yes” for the proper functioning of the PLB-21 with the BFS-VRM 03.

Menu structure

The following diagram shows the structure of the PLB-21 menu which affects the driver. All entries are described in detail. All other menu entries are described in the PLB-21 manual. For detailed instructions see the PLB-21 manual.

Menu root

- Setpoint
 - o Uincomp
 - o Bias
 - o Vref
 - o Ugate2
- TEC Setpoint
 - o TEC stp.
 - o TEC act.
- TEC Control
 - o Kp
 - o Ki
 - o Kd
 - o I_{max} (A)
- Measurement
 - o 5V
 - o 5V1
 - o Temp TEC
 - o I TEC
 - o Temp NTC
- Defaults
 - o def. pwron
 - o load defaults
 - o save defaults
- I2C
 - o I2C Addr.

Setpoint

Uincomp



This value is part of the calibration procedure performed at PicoLAS. It must not be changed by customer. Changes have an impact on the performance of the driver and may damage the LD and the driver. These changes are not subject to our warranty obligation.

All changes are monitored and will cause the lost of the warranty.

As of software version 1.0.8 any changes to this value are blocked.

Bias



This value is part of the calibration procedure performed at PicoLAS. It must not be changed by customer. Changes have an impact on the performance of the driver and may damage the LD and the driver. These changes are not subject to our warranty obligation.

As of software version 1.0.8 any changes to this value are blocked.

Vref

This value is the “Threshold level” of the laser firing monitor. If the photocurrent is higher than the level, the monoflop will be triggered and the laser firing output is set high.

Ugate2



This value is part of the calibration procedure performed at PicoLAS. It must not be changed by customer. Changes have an impact on the performance of the driver and may damage the LD and the driver. These changes are not subject to our warranty obligation.

All changes are monitored and will cause the lost of the warranty.

As of software version 1.0.8 any changes to this value are blocked.

TEC Setpoint

TEC stp.

This value defines the temperature setpoint of the TEC controller.

TEC. act.

This value shows the actual measured temperature of the TEC controller.

TEC Control

Kp

This value defines the strength of the proportional part of the TEC controller.

Factory setting is 2.0.

Ki

This value defines the strength of the integral part of the TEC controller.

Factory setting is 0.04.

Kd

This value defines the strength of the differential part of the TEC controller.

Factory setting is 0.0.

Imax (A)

This value defines the maximum current output of the TEC controller.

Factory setting is 1.0 A.

Measurement

5V

This value represents the actual measured voltage of the +5 V LD supply voltage input.

5V1

This value represents the actual measured voltage of the +5 V TEC supply voltage input.

Temp TEC

This value represents the actual measured TEC temperature.

I TEC

This value represents the actual measured TEC output current.

Temp NTC

This value represents the actual measured temperature of the onboard NTC.

Defaults

def. pwron

If enabled the BFS-VRM 03 loads default values every time it is powered on. These values are CRC checked at power up. If this check fails the values are not loaded and an error message is displayed.

Save defaults

When the jog dial is turned or the ENTER key is pressed all current values are saved.

Load defaults

When the jog dial is turned or the ENTER key is pressed all current values are overwritten by the saved ones. If the output was enabled at this time it becomes disabled.

I2C

I2C Addr.

This value defines the address on which the driver listens on the I²C bus.

Controlling the Driver via a PC

Introduction

When the BFS-VRM 03 is connected to a PC, it allows communications over a serial text interface as well as the PicoLAS protocol. While the text interface is designed for communication with a terminal program, the PicoLAS protocol is designed as a system interact protocol.

The switching between the two protocols occurs automatically as soon as the driver receives a certain sequence. The corresponding commands are:

- **PING** for the PicoLAS protocol (binary command, see below)
- **“init”** followed by <Enter> for the text interface

Description of the RS-232 Interface

The BFS-VRM 03 implements a standard RS-232 interface. It can be connected to a PC using a three-wire connection. For USB connection you need an USB RS-232 adaptor (USB serial adaptor).

The connection settings are:

| | |
|-----------|--------|
| Baud rate | 115200 |
| Data bits | 8 |
| Stop bits | 1 |
| Parity | even |

The Serial Text Interface

The following section describes the structure and commands of the text interface.

Structure

Every command that is sent to the driver must be completed with a CR (Enter). It consists of a command word followed by one or more parameters. If the command was successfully executed a "00" is sent, otherwise a "01". If there is an error pending, the response will be "10", otherwise "11". If the command requires an answer parameter, this parameter is sent before the confirmation is given.

Example 1:

The user would like to read out the actual temperature setpoint:

```
User input:          gtsoll<Enter>
Output of the driver: 250<CR><LF>
                   00<CR><LF>
```

Example 2:

The user would like to set a new setpoint current:

```
User input:          stsoll 270<Enter>
Output of the driver: 270<CR><LF>
                   00<CR><LF>
```

Input is done in ASCII code and is case sensitive. Every terminal can be used that supports this standard.

Commands for the BFS-VRM 03

The following table contains a command reference for the BFS-VRM 03.

| Command | Parameter | Description |
|-------------|----------------|---|
| ghwver | - | returns the hardware version number |
| gswver | - | returns the software version number |
| gserial | - | returns the serial number |
| gname | - | returns the device name |
| ps | - | prints out all settings |
| loaddef | - | load default values |
| savedef | - | save all settings as default values |
| autoload | 1 / 0 | enables or disables the automatic loading of default settings on power on |
| gerrtxt | - | returns the error register in text form |
| gerr | - | returns the error register as a 32 bit number |
| glstat | - | returns the laser status register |
| slstat | 32 bit number | sets the laser status register to the given value |
| guincompmin | - | returns the minimum possible UinComp voltage |
| guincompmax | - | returns the maximum possible UinComp voltage |
| guincomp | - | returns the actual UinComp voltage |
| suincomp | value | sets the UinComp voltage to the given value |
| gbiasmin | - | returns the minimal bias current |
| gbiasmax | - | returns the maximal bias current |
| gbias | - | returns the actual bias current |
| sbias | current in [A] | sets the bias current to the given value |
| gugate2min | - | returns the minimum possible Ugate2 voltage |
| gugate2max | - | returns the maximum possible Ugate2 voltage |
| gugate2 | - | returns the actual Ugate2 voltage |
| sugate2 | voltage in [V] | sets the Ugate2 voltage to the given value |
| gvrefmin | - | returns the minimal VREF value in [V] |
| gvrefmax | - | returns the maximal VREF value in [V] |
| gvref | - | returns the actual VREF value in [V] |
| svref | voltage in [V] | sets VREF to the given value in [V] |
| gi2cmin | - | returns the minimal possible I ² C address |
| gi2cmax | - | returns the maximal possible I ² C address |
| gi2c | - | returns the actual I ² C address |
| si2c | value | sets the I ² C address to the given value |
| g5v1 | - | returns the actual voltage of the +5V TEC input in [V] |
| g5v | - | returns the actual voltage of the +5V LD input in [V] |
| gitec | - | returns the actual TEC current in [A] |
| gttec | - | returns the actual TEC temperature in [°C] |
| gtntc | - | returns the actual temperature of the onboard NTC in [°C] |

| Command | Parameter | Description |
|-----------|----------------|---|
| gtist | - | returns the actual laser diode temperature in [°C] |
| gtsollmin | - | returns the minimal TEC temperature setpoint in [°C] |
| gtsollmax | - | returns the maximal TEC temperature setpoint in [°C] |
| gtsoll | - | returns the actual TEC temperature setpoint in [°C] |
| stsoll | - | sets the TEC temperature setpoint to the given value in [°C] |
| gkpmin | - | returns the minimal strength of the proportional part of the TEC controller |
| gkpmax | - | returns the maximal strength of the proportional part of the TEC controller |
| gkp | - | returns the actual strength of the proportional part of the TEC controller |
| skp | value | sets the strength of the proportional part of the TEC controller to the given value |
| gkimin | - | returns the minimal strength of the integral part of the TEC controller |
| gkimax | - | returns the maximal strength of the integral part of the TEC controller |
| gki | - | returns the actual strength of the integral part of the TEC controller |
| ski | value | sets the strength of the integral part of the TEC controller to the given value |
| gkdmin | - | returns the minimal strength of the differential part of the TEC controller |
| gkdmax | - | returns the maximal strength of the differential part of the TEC controller |
| gkd | - | returns the actual strength of the differential part of the TEC controller |
| skd | value | sets the strength of the differential part of the TEC controller to the given value |
| gimaxmin | - | returns the minimum current limiter value in [A] |
| gimaxmax | - | returns the maximum current limiter value in [A] |
| gimax | - | returns the actual current limiter value in [A] |
| simax | current in [A] | sets the TEC current limiter to the given value |

If an Error occurs

If an error occurs during operation the pulse output is switched off and the return value of a command is no longer “00” or “01” but “10” or “11.

To retrieve the error, use the **gerror** command for the content of the ERROR register or the **gerrtxt** command for a human readable form.

The PicoLAS Protocol

The following section describes the structure and possible commands of the PicoLAS protocol.

Structure

Each transmission consists of 12 bytes – called a frame as follows – which must be sent consecutively. Otherwise the system times out and the transmission must start again from the beginning.

A frame has a fixed structure. The first two bytes describe the command, the following eight bytes the parameters, followed by one reserved byte and one checksum byte. The checksum is calculated out of the first 11 bytes which are linked by a bitwise XOR.

Thus a frame has the following structure:

| Byte | Meaning |
|------|----------------------------|
| 1 | Bit 8-15 of the command |
| 2 | Bit 0-7 of the command |
| 3 | Bit 56-63 of the parameter |
| 4 | Bit 48-55 of the parameter |
| 5 | Bit 40-47 of the parameter |
| 6 | Bit 32-39 of the parameter |
| 7 | Bit 24-31 of the parameter |
| 8 | Bit 16-23 of the parameter |
| 9 | Bit 8-15 of the parameter |
| 10 | Bit 0-7 of the parameter |
| 11 | Reserved, always 0x00 |
| 12 | Checksum |

A properly received frame must be acknowledged by the recipient with an answer, which is also a frame. If the acknowledgement does not occur the command has not been processed and the sending procedure should be repeated.

If the recipient recognizes the command as valid, but not the parameters, then it will answer with an ILGLPARAM (0xFF12) as command.

In case that the recipient receives an invalid command it will answer with UNCOM (0xFF13).

If a faulty checksum is recognized then the answer is RXERROR (0xFF10). If this error occurs often the connection should be checked.

Using the REPEAT (0xFF11) command the recipient can instruct the sender to send the most recent frame again.

General Commands

The following list contains an overview of the general commands which are supported by every product from PicoLAS which makes use of this protocol. The explanation of the individual commands is given further below.

| Command Name | Sent Frame | | Answer Frame | |
|--------------------|------------|-----------|--------------|----------------------|
| | Command | Parameter | Command | Parameter |
| PING | 0xFE01 | 0 | 0xFF01 | 0 |
| IDENT | 0xFE02 | 0 | 0xFF02 | ID |
| GETHARDVER | 0xFE06 | 0 | 0xFF06 | Version |
| GETSOFTVER | 0xFE07 | 0 | 0xFF07 | Version |
| GETSERIAL | 0xFE08 | 0 ... 255 | 0xFF08 | Refer to description |
| GETIDSTRING | 0xFE09 | 0 ... 255 | 0xFF09 | Refer to description |

PING

This command is used to determine the presence of a connected device and to initialize the interface. It has no effect on the condition of the recipient. The command parameter is always zero, the answer parameter too.

IDENT

It is used to determine the device ID of an attached recipient. It has no effect on the condition of the recipient. The parameter is always 0. The answer contains the ID.

GETHARDVER

This command instructs the recipient to send back the version number of the hardware being used. The parameter is always zero. The answer contains the hardware version of the recipient. The format of the answer is: 0x000000<major><minor><revision>. In other words: one byte for each of the three elements of the version number.

As example, version 1.2.3 has the parameter 0x000000010203.

GETSOFTVER

Instructs the recipient to send back the version number of the software being used. The parameter is always 0.

The answer contains the software version of the recipient. The format of the answer is: 0x000000<major><minor><revision>. In other words: one byte for each of the three elements of the version number.

As example, version 2.3.4 has the parameter 0x000000020304.

GETSERIAL

Instructs the recipient to send back its serial number. If 0 is sent as parameter, the answer contains the number of (ASCII) digits of the serial number. Otherwise the respective position of the serial number is sent in ASCII format.

GETIDSTRING

Instructs the recipient to send back the name of the device. If 0 is sent as parameter, the answer contains the number of digits of the string. Otherwise the respective position of the serial number is sent in ASCII format.

In addition to these commands there are some answers, which can be given to every command:

| Answer | Answer Frame | |
|------------------|---------------------|------------------|
| | Command | Parameter |
| RXERROR | 0xFF10 | 0 |
| REPEAT | 0xFF11 | 0 |
| ILGLPARAM | 0xFF12 | 0 |
| UNCOM | 0xFF13 | 0 |

RXERROR

If a frame is repeated four times and still broken this answer will be sent.

REPEAT

The last frame was received in a broken state. The transmission must be repeated. This can be up to four times before a RXERROR will be send.

ILGLPARAM

The parameter of the last frame had an incorrect value.

UNCOM

The command of the last frame is unknown by the device.

Commands for the Driver

The following table contains a list of the commands which the driver supports in addition to the generally applicable commands. An explanation of each individual command follows afterwards.

| Command | Sent Frame | | Received Frame | |
|---------------|------------|----------------------|----------------|-----------------------------|
| | Command | Parameter | Command | Parameter |
| GETBIASMIN | 0x0010 | - | 0x0110 | minimum current in [mA] |
| GETBIASMAX | 0x0011 | - | 0x0110 | maximum current in [mA] |
| GETBIAS | 0x0012 | - | 0x0110 | actual current in [mA] |
| SETBIAS | 0x0013 | bias current in [mA] | 0x0110 | actual current in [mA] |
| GETUINCOMPMIN | 0x0020 | - | 0x0120 | minimum possible value |
| GETUINCOMPMAX | 0x0021 | - | 0x0120 | maximum possible value |
| GETUINCOMP | 0x0022 | - | 0x0120 | actual value |
| SETUINCOMP | 0x0023 | value | 0x0120 | actual value |
| GETMESS5V | 0x0030 | - | 0x0130 | +5V LD voltage in 0.01 [V] |
| GETMESS5V1 | 0x0031 | - | 0x0130 | +5V TEC voltage in 0.01 [V] |
| GETMESSITEC | 0x0032 | - | 0x0130 | TEC temperature in 0.1 [°C] |
| GETMESSITEC | 0x0033 | - | 0x0130 | TEC current in 0.01 [A] |
| GETMESSTNTC | 0x0034 | - | 0x0130 | NTC temperature in 0.1 [°C] |
| GETTECKPMIN | 0x0040 | - | 0x0140 | minimum TEC Kp value |
| GETTECKPMAX | 0x0041 | - | 0x0140 | maximum TEC Kp value |
| GETTECKP | 0x0042 | - | 0x0140 | actual TEC Kp value |
| SETTECKP | 0x0043 | Kp value | 0x0140 | actual TEC Kp value |
| GETTECKIMIN | 0x0044 | - | 0x0140 | minimum TEC Ki value |
| GETTECKIMAX | 0x0045 | - | 0x0140 | maximum TEC Ki value |
| GETTECKI | 0x0046 | - | 0x0140 | actual TEC Ki value |
| SETTECKI | 0x0047 | Ki value | 0x0140 | actual TEC Ki value |
| GETTECKDMIN | 0x0048 | - | 0x0140 | minimum TEC Kd value |
| GETTECKDMAX | 0x0049 | - | 0x0140 | maximum TEC Kd value |
| GETTECKD | 0x004A | - | 0x0140 | actual TEC Kd value |

| Command | Sent Frame | | Received Frame | |
|---------------|------------|--------------------------|----------------|----------------------------------|
| | Command | Parameter | Command | Parameter |
| SETTECKD | 0x004B | Kd value | 0x0140 | actual TEC Kd value |
| GETTECSOLLMIN | 0x004C | - | 0x0140 | minimum setpoint in 0.1 [°C] |
| GETTECSOLLMAX | 0x004D | - | 0x0140 | maximum setpoint in 0.1 [°C] |
| GETTECSOLL | 0x004E | - | 0x0140 | actual setpoint in 0.1 [°C] |
| SETTECSOLL | 0x004F | setpoint in 0.1 [°C] | 0x0140 | actual setpoint in 0.1 [°C] |
| GETVREFMIN | 0x0060 | - | 0x0160 | minimum voltage in 0.01 [V] |
| GETVREFMAX | 0x0061 | - | 0x0160 | maximum voltage in 0.01 [V] |
| GETVREF | 0x0062 | - | 0x0160 | actual voltage in 0.01 [V] |
| SETVREF | 0x0063 | voltage in 0.01 [V] | 0x0160 | actual voltage in 0.01 [V] |
| GETERROR | 0x0070 | - | 0x0170 | ERROR register |
| GETLSTAT | 0x0071 | - | 0x0170 | LSTAT register |
| SETLSTAT | 0x0072 | 32 bit value | 0x0170 | LSTAT register |
| GETREGS | 0x0073 | - | 0x0170 | see below |
| CLEARERROR | 0x0074 | - | 0x0170 | - |
| SAVEDEFAULT | 0x0080 | - | 0x0180 | - |
| LOADDEFAULT | 0x0081 | - | 0x0180 | - |
| GETUGATE2MIN | 0x0090 | - | 0x0190 | minimum voltage in 0.01 [V] |
| GETUGATE2MAX | 0x0091 | - | 0x0190 | maximum voltage in 0.01 [V] |
| GETUGATE2 | 0x0092 | - | 0x0190 | actual voltage in 0.01 [V] |
| SETUGATE2 | 0x0093 | voltage in 0.01 [V] | 0x0190 | actual voltage in 0.01 [V] |
| GETI2CMIN | 0x00A0 | - | 0x01A0 | minimum I ² C address |
| GETI2CMAX | 0x00A1 | - | 0x01A0 | maximum I ² C address |
| GETI2C | 0x00A2 | - | 0x01A0 | actual I ² C address |
| SETI2C | 0x00A3 | I ² C address | 0x01A0 | actual I ² C address |

Description of the individual Commands

GETBIASMIN

Returns the minimum possible bias current, measured in [mA].

GETBIASMAX

Returns the maximum possible bias current, measured in [mA].

GETBIAS

Returns the actual bias current, measured in [mA].

SETBIAS

Sets the bias current to the given value. It must be within the borders defined by GETBIASMIN and GETBIASMAX. The value is measured in [mA].

GETUINCOMPMIN

Returns the minimum possible UinComp voltage.

GETUINCOMPMAX

Returns the maximum possible UinComp voltage.

GETUINCOMP

Returns the actual UinComp voltage.

SETUINCOMP

Sets the UinComp to the given value. It must be within the borders defined by GETUINCOMPMIN and GETUINCOMPMAX.

GETMESS5V

Returns the actual measured voltage of the +5V LD input. The value is measured in 0.01 [V].

GETMESS5V1

Returns the actual measured voltage of the +5V TEC input. The value is measured in 0.01 [V].

GETMESSTTEC

Returns the actual measured TEC temperature. The value is measured in 0.1 [°C].

GETMESSITEC

Returns the actual measured TEC current. The value is measured in 0.01 [A].

GETMESSTNTC

Returns the actual measured NTC temperature. The value is measured in 0.1 [°C].

GETKPMIN

Returns the minimum possible strength of the proportional part of the TEC controller.

GETKPMAX

Returns the maximum possible strength of the proportional part of the TEC controller.

GETKP

Returns the actual strength of the proportional part of the TEC controller.

SETKP

Sets the strength of the proportional part of the TEC controller to the given value. It must be within the borders defined by GETKPMIN and GETKPMAX.

GETKIMIN

Returns the minimum possible strength of the integral part of the TEC controller.

GETKIMAX

Returns the maximum possible strength of the integral part of the TEC controller.

GETKI

Returns the actual strength of the integral part of the TEC controller.

SETKI

Sets the strength of the integral part of the TEC controller to the given value. It must be within the borders defined by GETKIMIN and GETKIMAX.

GETKDMIN

Returns the minimum possible strength of the differential part of the TEC controller.

GETKDMAX

Returns the maximum possible strength of the differential part of the TEC controller.

GETKD

Returns the actual strength of the differential part of the TEC controller.

SETKD

Sets the strength of the differential part of the TEC controller to the given value. It must be within the borders defined by GETKDMIN and GETKDMAX.

GETTECSOLLMIN

Returns the minimum possible temperature setpoint of the TEC controller. The value is measured in 0.1 [°C].

GETTECSOLLMIN

Returns the maximum possible temperature setpoint of the TEC controller. The value is measured in 0.1 [°C].

GETTECSOLL

Returns the actual temperature setpoint of the TEC controller. The value is measured in 0.1 [°C].

SETTECSOLL

Sets the temperature setpoint of the TEC controller to the given value. It must be within the borders defined by GETTECSOLLMIN and GETTECSOLLMAX. The value is measured in 0.1 [°C].

GETTECACT

Returns the actual measured temperature of the TEC controller. The value is measured in 0.1 [°C].

GETTECIMAXMIN

Returns the minimum possible value for the TEC current limiter. The value is measured in 0.01 [A].

GETTECIMAXMAX

Returns the maximum possible value for the TEC current limiter. The value is measured in 0.01 [A].

GETTECIMAX

Returns the actual value for the TEC current limiter. The value is measured in 0.01 [A].

SETTECIMAX

Sets the TEC current limiter to the given value. It must be within the borders defined by GETTECIMAXMIN and GETTECIMAXMAX. The value is measured in 0.01 [A].

GETVREFMIN

Returns the minimum possible reference voltage, measured in 0.01 [V].

GETVREFMAX

Returns the maximum possible reference voltage, measured in 0.01 [V].

GETVREF

Returns the actual reference voltage, measured in 0.01 [V].

SETVREF

Sets the reference voltage to the given value. It must be within the borders defined by GETVREFMIN and GETVREFMAX. The value is measured in 0.01[V].

GETERROR

Returns the content of the error register (32 bit). For a detailed description of the single bits see section “Description of the ERROR Register”.

GETLSTAT

Returns the content of the laser status register (32 bit). For a detailed description of the single bits see section “Description of the LSTAT Register”.

SETLSTAT

Sets the laser status register to the given value. The return value contains the acquired register content. For a detailed description of the single bits see section “Description of the LSTAT Register”.

GETREGS

Returns the content of the laser status register and the error register in a single 64 bit word. The upper 32 bit represents the ERROR, the lower 32 bit the LSTAT register.

CLEARERROR

This command clears the ERROR register. It is currently not used.

LOADDEFAULTS

This command replaces all internal parameters with their default values. If the output is enabled during the execution of this command, the L_ON bit of the LSTAT register will be cleared and the output disabled. This command will fail if the CRC_DEFAULT_FAIL bit in the ERROR register is set, indicating an error within the data.

If the DEF_PWRON bit in the LSTAT register is set, the device automatically loads these values during power up.

SAVEDEFAULTS

This command saves all internal parameters into an EEPROM for later usage. Use command LOADDEFAULTS to restore them.

GETUGATE2MIN

Returns the minimum possible Ugate2 voltage, measured in 0.01 [V].

GETUGATE2MAX

Returns the maximum possible Ugate2 voltage, measured in 0.01 [V].

GETUGATE2

Returns the actual Ugate2 voltage, measured in 0.01 [V].

GETI2CMIN

Returns the minimum possible I²C address.

GETI2CMAX

Returns the maximum possible I²C address.

GETI2C

Returns the actual possible I²C address.

SETI2C

Sets the I²C to the given value. It must be within the borders defined by GETI2CMIN and GETI2CMAX.

Description of the LSTAT Register

The following list contains a description of the individual LSTAT bits. These can be read with the GETLSTAT and written with SETLSTAT command.

| Bit | Name | Read/Write | Meaning |
|------|-----------|------------|--|
| 0 | PULSER_OK | ro | When “1” there is no error pending. |
| 1 | DEF_PWRON | r/w | When “1”, the driver loads its default values on start up. |
| 2 | SAVE_DEF | w | When set to “1” the driver load its default values. Always read “0”. |
| 3 | LOAD_DEF | w | When set to “1” the driver save the current settings as new default values. Always read “0”. |
| 4-31 | Reserved | ro | Reserved |

Description of the ERROR Register

The following list contains a description of the individual bits of the ERROR register. It can be read with the GETERROR command.

| Bit | Name | Read/Write | Meaning |
|------|-----------------|------------|---|
| 0 | CFG_CHKSUM_FAIL | ro | A CRC error was detected in the internal configuration values. Please contact your distributor. |
| 1 | PLB_CHKSUM_FAIL | ro | A CRC error was detected in the PLB driver. The driver cannot be used. This does not affect the device but the PLB. |
| 2 | DEF_CHKSUM_FAIL | ro | A CRC error was detected in the default values. A re-save of the values should correct this. |
| 3 | VCC_LD_FAIL | ro | The measured voltage on the +5 V LD input is not within valid range. |
| 4 | VCC_TEC_FAIL | ro | The measured voltage on the +5 V TEC input is not within valid range. |
| 5-31 | Reserved | ro | |